

Pure and simple **push-fit solutions**

for drinks dispense and
water treatment





Solutions to
Shape the World™

One family

Reliance Worldwide Corporation (RWC) and its family of brands transform the way pipe connections are made across the globe for a diverse range of sectors such as drinks dispense, plumbing & heating, compressed air & pneumatics, telecoms and automotive.

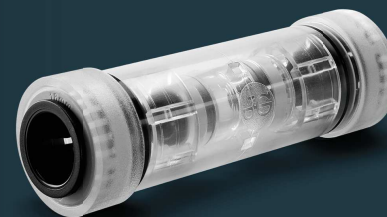
of brands

Millions of connections made worldwide

Both market leaders and niche players have been using our push-fit technology for more than five decades to solve the key challenges they face. Why? Because the clever science behind our solutions ensure optimal performance, while providing fast, simple and reliable installation.

Precision engineering and world-class quality

Innovative design is at our core. It means clever, time-saving solutions for you, engineered with lasting quality you can rely on. From state-of-the-art R&D to world-class product testing and quality control, our innovations are the by-product of pure engineering mastery. The same ethos drives our customer service and design service, ensuring we provide expert support whenever you need it.



How Super Speedfit works

To make a connection, the tube is simply pushed in by hand; the unique patented John Guest collet locking system then holds the tube firmly in place without deforming it or restricting flow.

Materials of construction

Super Speedfit fittings are made up of three components:

Bodies are produced in an acetal copolymer or polypropylene.

O-Rings are nitrile rubber or EPDM.

Collets are produced in acetal copolymer or polypropylene with stainless steel teeth.

Grips before it seals

O-Ring provides a leakproof seal

The Collet has stainless steel teeth which hold the tube firmly in position while the O-Ring provides a permanent leakproof seal.

How to make a connection

Cut the tube square



Cut the tube square and remove burrs and sharp edges. Ensure the outside diameter is free of score marks. For soft or thin walled tube we recommend the use of a tube insert.

Push up to tube stop



Push the tube into the fitting, to the tube stop.

Pull to check secure



Pull on the tube to check it is secure. Test the system before use.

To disconnect

Push in collet and remove tube



To disconnect, ensure the system is depressurised, push the collet square against the fitting. With the collet held in this position the tube can be removed.



Typical Bar Installation

Super Speedfit push-fit fittings have been designed for a wide range of industrial applications. They provide a fast and secure way of connecting tubes and offer considerable advantages over conventional fittings.

Complex tubing systems can be assembled more rapidly than with traditional methods and because Super Speedfit fittings are easy to disconnect, fault finding and maintenance become a much easier operation.

